



## Greetings from the Conference Chair

The Edmonton Planning Committee has been hard at work putting together a program that will show you why the Y2K conference theme is "Aging With Attitude". This week you will discover why Edmonton is the place to be: even with global warming you will never be too hot and you don't need to worry about El Nino (or provincial taxes when you shop till you drop at the world's largest shopping mall)! This year's conference is organized around three themes of great importance to the field of gerontology: housing and the built environment, wellness, and technology. In addition to three internationally renowned keynote speakers, the conference has an outstanding selection of pre-conference events and over 250 scientific papers and presentations bringing the latest in new programs and research from across the nation and beyond. You also won't want to miss our line-up of seniors ready to demonstrate their attitude to aging throughout the conference. We are delighted that you have joined us in Edmonton in 2000 – and we trust that you have brought your attitude (positive!) and your walking shoes so you don't miss participating in a thing!

Corinne Schalm  
Acting Conference Chair

## Organizing Committee

<b>Conference Chair</b>	Phil Gaudet
<b>Acting Conference Chair</b>	Corinne Schalm
<b>Program</b>	Sandra O'Brien Cousins
<b>Pre-Conference Workshops</b>	Corinne Schalm
<b>CME Course</b>	Anne Sclater
<b>Exhibits and Fundraising</b>	Dianne Mirosh
<b>Volunteers</b>	Jolyn Saramaga
<b>Social Program &amp; Tours</b>	Vivien Lai
<b>Public Relations and Media</b>	Nicole Dodds
<b>Member at Large</b>	Reg Appleyard
<b>CAG Liaison</b>	Norah Keating
<b>Committee Support</b>	Debra Elm
<b>CAG Executive Director</b>	Linda O'Rourke
<b>CAG Conference Coordinator</b>	Sarah Bercier

## Table of Contents

Sponsors .....	i
Greetings .....	1
Organizing Committee .....	1
Table of Contents .....	1
Registration Information .....	2
Special Events.....	3
Program at a Glance .....	3
Floor Plans.....	4
<b>Thursday, October 26 .....</b>	<b>5</b>
<b>Friday, October 27 .....</b>	<b>6</b>
<b>Saturday, October 28.....</b>	<b>14</b>
Exhibitors .....	25
<b>Programme français .....</b>	<b>37</b>
Abstracts .....	53
Authors .....	125

Canadian Association on Gerontology  Association canadienne de gérontologie

## Conference Secretariat

<b>Executive Director</b>	Linda O'Rourke
<b>Conference Coordinator</b>	Sarah Bercier
<b>Conference Assistant</b>	Chris Clapp
<b>Registration Coordinator</b>	Francine Charbonneau
<b>Registration Services provided by confersense planners inc.</b>	
	Chuck E. Shouwerwou
	Jessica Regnier

Canadian Association on Gerontology  
Association canadienne de gérontologie  
100 - 824 rue Meath Street  
Ottawa (Ontario) K1Z 6E8  
Tel / Tél : (613) 728-9347  
Fax / Téléc : (613) 728-8913  
E-mail / Courriel : info@cagacg.ca  
Web Site / Site Web : www.cagacg.ca

# Registration Information

## Registration Fees

The registration fee covers the opening ceremonies and reception, all keynote sessions, your choice of more than 250 divisional presentations, refreshment breaks, exhibits, and one copy of the abstract book. It **does not include** hotel accommodation, meals or pre-conference activities. **Additional program books are available from the registration desk at a cost of \$12.**

## On-Site Registration

Tickets for all special events are available at the registration desk (space permitting).

## Confirmation of Registration

Official receipts for on-site registration will be issued, whenever possible, upon receipt of payment. Otherwise, receipts will be mailed out following the conference.

## Cancellation Policy

Requests for refunds were only accepted if made in writing before September 28, 2000. There will be no refunds for pre-conference activities unless the event is cancelled.

## Registration Kits

Your registration package should include the following:

- 1 Program Book and Addendum Sheet
- Your Identification Badge
- Event Tickets for which you have registered
- Order Form for Audio Tapes of all Keynote Sessions
- Promotional Materials

## Identification Badges

Identification badges will be issued on-site with your registration package. These badges are required for admission to all sessions of the scientific program, the luncheons, and the exhibits. **Replacement badges will be available at the registration desk for \$12.**

- |                               |                         |
|-------------------------------|-------------------------|
| Board of Directors - Bronze   | Full Conference - Clear |
| Organizing Committee - Silver | Thursday only - Yellow  |
| Exhibitors - Orange           | Friday only - Green     |
| Volunteers - Red              | Saturday only - Blue    |
| CAG Staff - Purple            | CGS Delegates - Black   |

## Join Now and Save

Save on your conference registration fees by becoming a CAG member today! In addition to reduced annual conference fees, all CAG members receive the following CAG publications: the CAG Newsletter, containing up-to-date information on provincial, national and international news, resources, and other items of interest; and the Canadian Journal on Aging, a quarterly, scholarly, refereed journal, rated amongst the top ten in the world, which publishes manuscripts concerning all realms of aging. Membership forms are available at the registration desk or the CAG booth.

## Students / Seniors

To be eligible for these special rates, a person may be requested to provide proof of senior or full-time student status.

## Substitute Registrations

If a delegate is unable to attend the conference for any reason, another person may attend in their place. A written request from the delegate is required. If applicable, any difference in fees will be charged.

## Organizational Members

The CAG allows up to three (3) persons from a member organization to attend the conference at the membership rate.

## Win a Free Registration

As a member, YOU CAN WIN a free registration to CAG '00! Simply fill in your name (CAG members only) at the bottom of the membership form next to "recruited by" and pass these to your colleagues. For every one who becomes a member, you have a chance to win! The winner will be announced at the Annual General Meeting. Forms are available at the CAG registration desk.

## Registration Desk

Tickets for special events, information and more are available at the Conference Registration Desk located in the Second Floor Foyer at the Edmonton Westin Hotel. Please note the following hours.

### Pre-Conference Workshop Registration

Thursday, October 26, 7:30 - 9:30

### Continuing Medical Education Course Registration

Thursday, October 26, 7:30 - 9:30

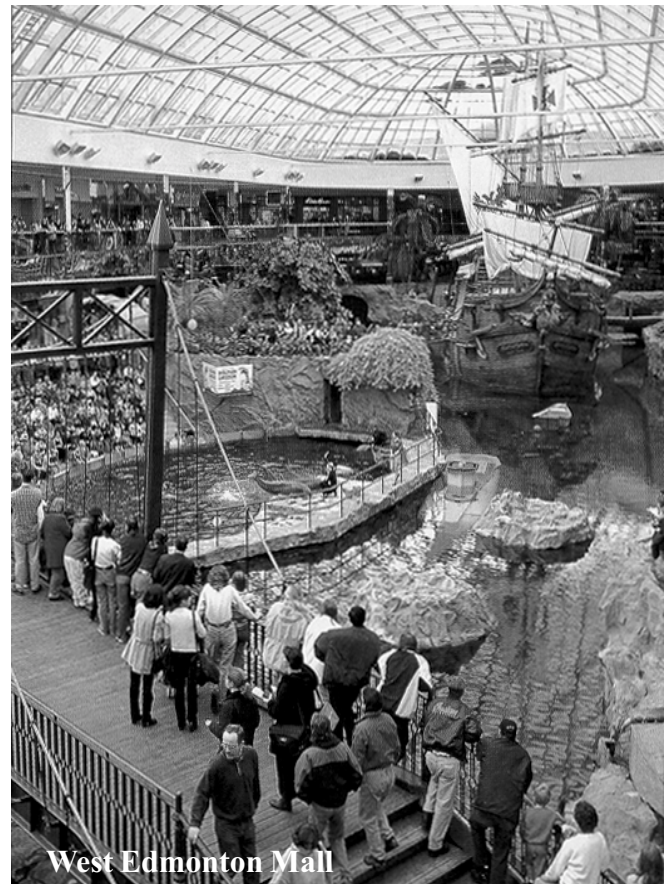
### Conference Registration

Thursday, October 26, 14:00 - 21:00

Friday, October 27, 7:30 - 16:00

Saturday, October 28, 7:30 - 16:00

There will be no on-site registration from 11:00 - 14:00 daily.



## Special Events Overview

### Opening Ceremonies and Reception

**Thursday, October 26, 19:00 - 23:00**

The Opening Ceremonies will set the tone for the conference theme, "Aging with Attitude". Stay tuned! After the welcoming comments from dignitaries, Rosalie Kane will provide the first keynote address of the conference. Join us afterwards for a reception in the Exhibition Hall.

### Divisional Luncheons

**Friday, October 27, 12:15 - 13:45**

The Division Chairs have each organized divisional luncheons this year in order to bring together members of their division to share common issues and concerns. Visit the Registration Desk for ticket availability.

### Meet the CJA Editors

**Friday, October 27, 15:30 - 16:00**

The Editor-in-Chief and Section Editors of the Canadian Journal on Aging will be available to answer questions concerning the Journal and its review process, and to informally discuss plans for the coming year.

### Annual General Meeting

**Friday, October 27, 16:00 - 17:30**

The agenda and documents were sent to members in August. All delegates are encouraged to attend.

### Students' Events

**Thursday, October 26 and Friday, October 27**

Students of all ages attending the conference should plan to attend our student events. These events will provide opportunities to meet other students attending the conference (before it even begins) and learn about their areas of interest in the field of gerontology.

*Meet & Greet* - Meet Thursday, October 26 at noon to spend the afternoon together (possibly at the West Edmonton Mall).

*An Evening on the Town* - Beginning at 17:30, Friday evening will be a night out on the town - a guaranteed good time! You are responsible for your own costs but we do need to know how many people to prepare for so please sign up at the Registration Desk if you have not already done so. See you there!

### The President's Luncheon

**Saturday, October 28, 12:15 - 13:45**

Please join the CAG President, Dr. Pierre Soucie, for lunch. Individuals will be recognized for their contributions to both the CAG and the field of gerontology. Presentations will be made to: Lynn McDonald, recipient of the CAG Distinguished Member Award; and Trisha Gavin, recipient of the CAG Donald Menzies Award.

### Oktoberfest

**Saturday, October 28, 18:15**

Join us in celebrating the fact that we don't need to get up early Sunday morning for more presentations - no curfew tonight! In recognition of Edmonton's large German community and the timing of the conference, we are planning a CAG Oktoberfest - pack those laderhosen! We will hear from the IAG organizing committee and our conference closing speaker, Frank Ogden, will entertain and challenge us with his thoughts on where technology is taking us. You won't want to miss this grand finale to the conference!

## Program at a Glance

### Thursday, October 26

08:30 - 16:30	Pre-Conference Events
12:00	Student Meet & Greet
19:00 - 21:00	Opening Ceremonies
	Keynote Session I
	Speaker: Rosalie Kane
21:00 - 23:00	Reception & Exhibits

### Friday, October 27

07:00 - 08:00	Friday Sunrise Walk
08:30 - 10:00	Keynote Session II
	Speaker: Gerry Glassford
10:00 - 10:30	Break & Exhibits
10:00 - 12:00	Poster Session I
10:30 - 12:00	Divisional Session I
12:15 - 13:45	Divisional Luncheons
14:00 - 15:30	Divisional Session II
14:00 - 16:00	Poster Session II
15:30 - 16:00	Break & Exhibits
15:30 - 16:00	Meet the CJA Editors
16:00 - 17:30	Annual General Meeting
17:30 - 19:00	AAG Reception
17:30	Student Evening on the Town

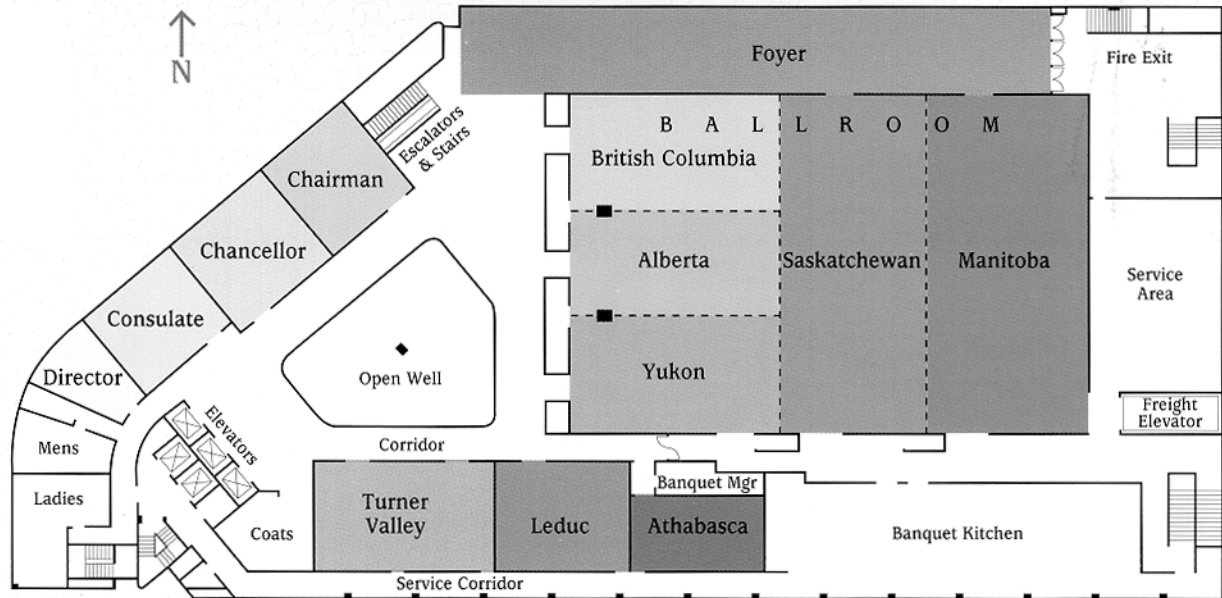
### Saturday, October 28

07:00 - 08:15	Complimentary Breakfast Tour
08:30 - 10:00	Divisional Session III
10:00 - 10:30	Break & Exhibits
10:30 - 12:00	Audio-Visual Session
10:00 - 12:00	Poster Session III
10:30 - 12:00	Divisional Session IV
12:00 - 13:00	Saturday Lunch Refresher Walk
12:15 - 13:45	Presidential Luncheon & Awards
14:00 - 15:30	Divisional Session V
15:30 - 16:00	Break & Exhibits
16:00 - 17:30	Divisional Session VI
18:15	Oktoberfest
	Keynote Session III
	Speaker: Frank Ogden

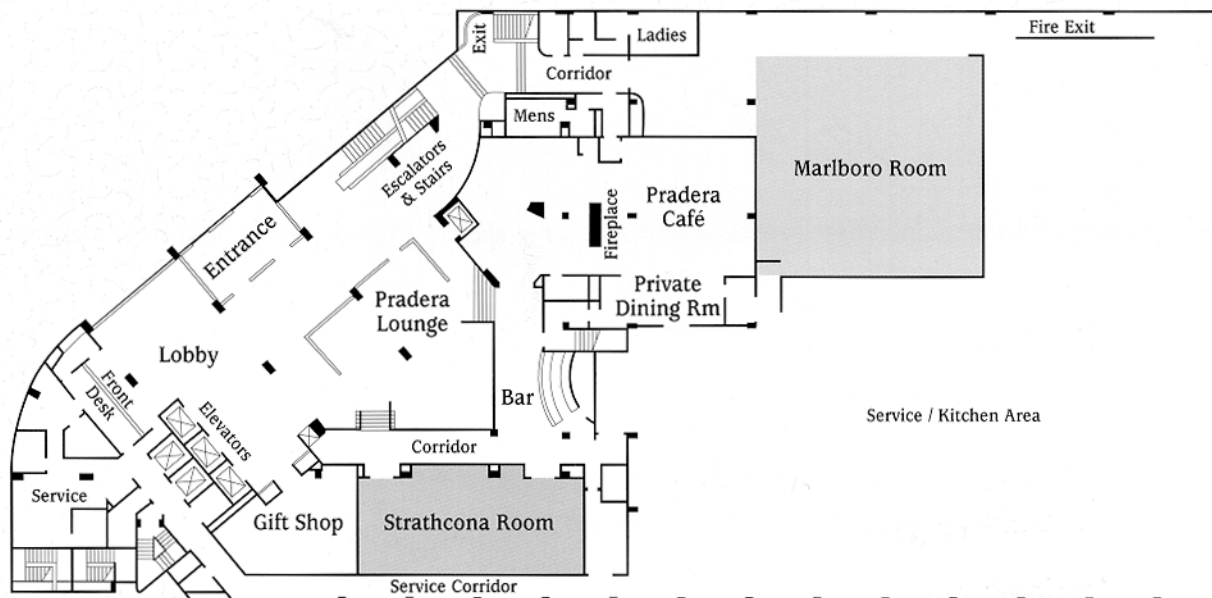




# THE WESTIN EDMONTON



Second Floor



Main Floor

Note: The Imperial Suite and the Royal Suite are located on the 20th floor.



## Pre-Conference Events

# Thursday, October 26

### Workshop 1

#### New Models of Continuing Care in Alberta

This workshop will describe five new models of continuing care which have received attention across Canada. These models were developed as alternatives to traditional nursing homes. In the morning, representatives from the program sites and government will provide an overview of the models and how they were developed, including the results of research and evaluation studies carried out at the sites. Those wishing to view some of the sites in the afternoon may choose three locations to tour. Transportation will be provided. (See registration form to select preferred sites on a first-come first-served basis.) The five models are: The Good Samaritan Society's Wedman House (assisted living) and Wedman Village (duplexes for individuals with dementia), the Capital Health Authority's CHOICE day program which is the first Canadian PACE replication site (*The CAPITAL CARE Group* Norwood site), and *The CAPITAL CARE Group's* Laurier House (a life lease continuing care centre) and McConnell Place West (a specially-built Alzheimer care centre).

**Organizers:** Vivien Lai, Alberta Health and Wellness  
Corinne Schalm, *The CAPITAL CARE Group*  
**Time:** Workshop: 08:30 – 12:00  
Tours: 13:00 – 16:30  
**Location:** Strathcona Room  
**Language:** English

### Workshop 2

#### RAI/MDS Research and Demonstration Projects in Canada

This workshop will present an overview of research and demonstration initiatives related to the Resident Assessment Instrument/Minimum Data Set (RAI/MDS) tools being tested or implemented in six provinces. Presentations will provide a description of implementation issues related to policy and clinical areas as well as findings from current research and evaluation efforts in continuing care.

**Organizer:** Dr. Colleen Maxwell University of Calgary  
**Speakers:** Sandra Cook Nova Scotia Department of Health  
Dr. John Hirdes Canadian Collaborating Centre - interRAI  
Bev Kyle Manitoba Health  
Steve Labine Prince Albert Health District  
Marie Lyle Alberta Health and Wellness  
Dr. Colleen Maxwell University of Calgary  
Dr. Danielle Papineau North Shore Health Region, Vancouver  
Corinne Schalm *The CAPITAL CARE Group*, Edmonton  
Dr. Michael Stones Lakehead University  
Dr. Gary Teare Canadian Collaborating Centre - interRAI

**Time:** 08:30 – 16:30  
**Location:** Turner Valley Room  
**Language:** English

### Workshop 3

#### Multiple Interventions: An Approach for Population Health Action in the Elderly

The use of multiple intervention programs has emerged from a growing understanding of multi-causality, an emerging understanding of interdependencies among determinants of health and illness, and a systems theory view of the change process. Multiple intervention programs are directed at more than one level of the system (e.g., individual, organizational, community, political). This interactive workshop will review some of the existing measures, theories and methods for population health multiple intervention studies among the elderly in the community using fall prevention for seniors as a concrete example.

**Organizer:** Dr. Geoffrey Gurd, University of Ottawa  
**Speakers:** Dr. Nancy Edwards, University of Ottawa  
Others to be announced  
**Time:** 08:30 – 16:30  
**Location:** Leduc Room  
**Language:** English

### CME Program

The CME day is targeted at physicians but is open to individuals from all disciplines interested in attending. The morning session is entitled "Dementia – Strategies for the Primary Care Physician" and includes presentations on differentiating dementias, new drugs for the treatment of dementia, approaches to behavioural issues and using antipsychotic drugs in dementia. The afternoon session is entitled "Managing Vascular Risk Factors in the Elderly —Does it Matter?" and includes presentations on treating atrial fibrillation, hypertension, elderly diabetics, and medical paternalism, bioethics and futility.

**Organizer:** Dr. Anne Sclater, Director, Division of Geriatric Medicine, University of Alberta and Northern Alberta Regional Geriatric Program  
**Committee:** Dr. Chris Lord, Dr. John Morissey, Dr. Jean Triscott, Dr. Angela Juby  
**Presenters:** Dr. C. Patterson, McMaster University  
Dr. P. McCracken, University of Alberta  
Dr. R. Camicioli, University of Alberta  
Dr. R. Ancill, University of British Columbia  
Dr. W.B. Dalziel, University of Ottawa  
Dr. B. Goldlist, University of Toronto  
Dr. G. Meneilly, University of British Columbia  
Dr. M. Gordon, University of Toronto  
Dr. D. Robertson, University of British Columbia  
Dr. G. Griener, University of Alberta  
**Time:** 08:30 – 16:30  
**Location:** Marlboro Room  
**Language:** English  
**Note:** This CME Day is part of the CAG-CGS joint conference.  
**Credits:** The CME Course has been approved for Section 1 (Accredited Group Learning Activities) of the Framework of Certification through the Royal College of Physicians.



## Opening Night Events

**Thursday,  
October 26**



**Friday,  
October 27**

### Opening Ceremonies & Reception

Time: 19:00 - 23:00

Locations: Ceremonies: Manitoba/Saskatchewan Room  
Reception: Exhibition Hall

The Opening Ceremonies will set the tone for the conference theme, "Aging with Attitude". Stay tuned! After the welcoming comments from dignitaries, Rosalie Kane will provide the first keynote address of the conference. Join us afterwards for a reception in the Exhibition Hall.

### Keynote Session

Time: 20:00 - 21:00

Location: Manitoba/Saskatchewan Room

*Please Note: This session will be presented in English. Simultaneous interpretation and audio-taping are provided for all Keynote Sessions. If you require a translation device or would like to purchase an audio cassette of this presentation, please visit TELAV Audio-Visual Services at the back of the room.*



#### Housing Dr. Rosalie Kane

*"Can 'Home-Like' Become Home? The Evolution of Assisted Living in the United States"*

Rosalie A. Kane, D.S.W., is a professor of public health at the University of Minnesota, where she is also on the faculty of the Center for Biomedical Ethics and the School of Social Work. Since 1989, she has directed a Long-Term Care Resource Center, providing technical assistance, research and development, and information dissemination to advance state efforts in home and community-based care. Her research focuses on long-term care for disabled older persons and other dependent groups, including quality of care, assessment, case management, home care, nursing home care, and more recently, the study of values and ethics. Between 1988 and 1992, she was Editor-in-Chief of *The Gerontologist*. Presently, she leads a national study on "Measurement, Indicators, and Improvement of the Quality of Life in Nursing Homes" (funded by Health Care Financing Administration) and a national study on the "Home Care/Assisted Living Connection" (funded by the Home Care Resource Initiative of the Robert Wood Johnson Foundation.) In 1999, she received a Robert Wood Johnson Foundation Health Services Research Investigator Award. She is a prolific writer of books, reports and journal articles.

### Friday Sunrise Walk

Time: 7:00 - 8:00

Location: Meet in the Westin lobby

This is a free one-hour walking tour. Meet in the Westin lobby by 7 am to be greeted by a member of The Churchill staff. You will be given a two block walking tour north on Churchill Square with a guide pointing out city landmarks. You will then enjoy an inside tour of The Churchill, a new concept in elegant supportive community living with complimentary coffee and muffins. An escorted walk back to the Westin will take you through the "underground" Pedway system that is the active living link for many seniors during the winter months. A signup sheet will be available at the registration desk or call Pat Chorney at (780) 420-1222. Leave your name and hotel room number.

### Keynote Session

Time: 8:30 - 10:00

Location: Manitoba/Saskatchewan Room

*Please Note: This session will be presented in English. Simultaneous interpretation and audio-taping are provided for all Keynote Sessions. If you require a translation device or would like to purchase an audio cassette of this presentation, please visit TELAV Audio-Visual Services at the back of the room.*



#### Wellness Dr. Gerry Glassford

*"Challenging the Clock: The Full Being Experience"*

Coordinator of Graduate Programs at the Centre for Health Promotion Studies, University of Alberta, Dr. Glassford is an internationally recognized figure in the area of Wellness and Health Promotion. By action and deed, his lifestyle epitomizes the "new age" senior. As former Dean of Physical Education and Recreation, Dr. Glassford masterminded wellness in his role as pioneer of the "active living" concept in Canada. He is closely involved in the creation and operation of the Alberta Sports Council and is actively engaged in other agencies too numerous to mention. In discussing the *full being experience*, Dr. Glassford notes that scientists have claimed for decades that our bodies are capable of sustaining a life span of 120 plus years. Why, then, is the average life span of Canadians less than four score years? There is no single answer to such a question nor are there simple answers. The answers are most likely to be found in the woof and warp of total life – the *full being experience*. If we are to challenge our biological clock, Dr. Glassford proposes that we cannot do so without embracing a



Friday,  
October 27

different conceptual model, that of the *full being experience*, based on holistic well being. If we accept this model, we must learn to live with it in all of its complexities. We need to be prepared to accept that there is no *silver bullet*, no single step or procedure, available to us in our quest for positive health and increased longevity. But the knowledge base for this model is here now. We have to develop an understanding of this knowledge and find ways to embed it in our daily living, our *full being experience*. If we do this, Dr. Galssford argues, we can slow down the aging process.

## Break / Exhibits

Time: 10:00 - 10:30

Location: Exhibition Hall

Complimentary coffee, tea and muffins are available in the Exhibition Hall.

Sponsored by:



## Poster Session

Time: 10:00 - 12:00

Location: Exhibition Hall

- 1 Réduction des contentions physiques non pertinentes / Reduction of Unnecessary Physical Restraint (1) *Claire Babin, Joanne Boisvert, Maryse L. Savoie*
- 2 Recognition of Renal Impairment and Implications on Medication Prescribing in the Elderly (2) *Trevor J. Byers*
- 3 Change and Stability in Perceived Control: Relationships to Well-Being (3) *Judith G. Chipperfield, Darren W. Campbell*
- 4 Late Stage Parkinson's - A Specialized Program (4) *Leslie Coxall, Andrea Moser*
- 5 Measuring Financial Skills (5) *Kris L. Cramer, Holly A. Tuokko, Catherine A. Mateer*
- 6 La douleur comme 5<sup>e</sup> signe vital / Pain as the Fifth Vital Sign (6) *François Desroches, Maryse L. Savoie*
- 7 Intellectual Assessment of Older Adults with Hearing or Vision Impairments (7) *Ann-Louise E. Ellwood, Candace A. Konnert*
- 8 Caregiver Burden in Alzheimer's Disease: Results from an Open-Label, Randomized, Multicentre Clinical Trial Evaluating the Effectiveness of Donepezil Hydrochloride vs. Donepezil with Triad (8) *Serge Gauthier, Isabelle Lussier, The Triad Study Group*
- 9 Chronic Pain in Elderly, Institutionalized Veterans: Changes Over Time (9) *Maggie Gibson, Nancy Bol, Gail Woodbury, Kim Hay*
- 10 From Output Measures to Outcomes: Functional Change and Rehabilitation (10) *Rita Hooper, Frank MacDonald, Diane Persson*
- 11 Family Group Conferences for Seniors (11) *Melissa H. Buckler, Hilde Houlding*
- 12 Putting the Life Back into Living - An Activity Program on an Advanced Parkinson Unit (12) *Mary Burges, Christiane Charron, Isabelle Landriault*
- 13 Physical Activity Programs in Alberta Continuing Care Facilities (13) *John C. Spence, Pauline Poon, Marie Carlson, Jennifer L. Hystad*
- 14 Stress, Personality Traits and Coping Responses Among Older Adults (14) *Norm O'Rourke, Philippe Cappeliez*
- 15 A New Couples Measure of Biased Responding: The Marital Aggrandizement Scale (15) *Norm O'Rourke, Philippe Cappeliez*
- 16 Changements comportementaux et psychosociaux d'anciens combattants suite à un transfert intra-institutionnel (16) *Christine Maheu, Mary Reidy, Caroline Longpré*
- 17 Étude sur la perception de cinq anciens combattants canadiens de leur déménagement du domicile vers un centre hospitalier de soins de longue durée (17) *Christine Maheu, Mary Reidy*

- 18 Déterminants psychosociaux d'infirmières face à l'adoption de comportements de soins qui réduisent le bruit dans les unités de soins de longue durée pour personnes âgées (18) *Christine Maheu, Mary Reidy, Marilyn Aita*

## Divisional Sessions

Time: 10:30 - 12:00

### Paper Sessions

Theme: **Active Living and Exercise Benefits for Older Adults**

Chair: Andrew Wister

Room: Chairman

- Stories about Aging and Active Living (19) *Bevan C. Grant*
- Everything I Needed to Learn I Learned in my Fitness Class: Perceptions of Older Attitudes of the Value of a Formal Exercise Class (20) *Garry D. Wheeler*
- The Impact of Chronic Illness for Stages of Exercise Change Among Older Adults (21) *Andrew V. Wister, Z. Romeder*

Theme: **Informal Caregiving: Employment and Family Issues**

Chair: Norah Keating

Room: Chancellor

- The Consequences of Caregiving: Does Employment Make A Difference? (22) *Candace L. Kemp, Carolyn J. Rosenthal*
- Employment Status and Caregiver Burden Among Adult Children (23) *Laurel A. Strain, Pamela G. Hawranik, Audrey A. Blandford*
- The Context of Sons' Care: Exploring Men's Experience in Filial Caregiving in the Context of Family and Work (24) *Lori D. Campbell*
- Episodic Crises in the Provision of Care to Elderly Relatives: An Adaptational Perspective (25) *Joanie Sims Gould, Anne Martin-Matthews*

Theme: **Patterns of Service Use of Older Adults**

Chair: Joseph Tindale

Room: Consulate

- Older Adults' Use of Health Services: An Exploratory Study (26) *Patricia D. Leggett, Lory Laing, Don Voaklander, Norah C. Keating*
- Functional Interdependence: The Impact of Housing, Neighbourhood and Non-Formal Support Networks on Service Non-Utilization by Seniors (27) *Mark Groves, Anita Govindan, Lisa Cox, Maree Gabbedy*
- Changes in Patterns and Predictors of Physician and Hospital Utilization Among Older Adults: Regional Differences (28) *Diane E. Allan*
- Putting Health Care into Context: The Perceptions of Ever-Single Older Women (29) *Jennifer L. Baumbusch, Helene Berman*
- Listening to Seniors Through the Planning Process: An Elder Friendly Hospital (30) *Belinda B. Parke, Lynn Stevenson*

Theme: **Clinical Treatment Issues: Geriatric Assessment and Outcomes**

Chair: Lyla Graham

Room: Athabasca

- Tracking Geriatric Outcomes in Real Time (Part I) (31) *Frank D. Knoefel, David Dalle*
- Tracking Geriatric Outcomes in Real Time (Part II) (32) *Frank D. Knoefel, David Dalle*





**Friday,  
October 27**

- Randomized Trial of an Emergency Department (ED) Intervention for High-Risk Seniors: Effects on Process of Care (33) *Jane McCusker, Josée Verdon, Pierre Tousignant, Louise Poulin de Courval*
- An Evaluation of Cranial CT Scan Usage in a Memory Clinic (34) *Angela G. Juby*
- Delirium is an Independent Predictor of One-Year Survival (35) *Jane McCusker, Martin G. Cole, Michal Abrahamowicz, François J. Primeau*
- The Clinical View of Orofacial-Somatic Disorders Beyond the Age of 60 (36) *Anne R.E. Wolowski, Venta A. Rudovics*

Theme: **New Approaches in Continuing Care**

Chair: Maureen Gorman

Room: Leduc

- An Innovative Approach to Incident Reporting in Continuing Care (37) *Queenie Choo, Bill Chestnutt, Ellen Ayles, et al.*
- A New Approach to Bathing Experience in Continuing Care (38) *Charlotte LaRose, Queenie Choo, Joanne Flamand, et al.*
- How Do Care Outcomes and Service Patterns Relate to Behavioural Problems Among Elderly Patients with Dementia? (39) *Katharine Paddock, Jean Kozak*
- Safe Haven - Evaluation of a Continuing Care Program (40) *Sonia M. Parker*
- Building Bridges Between Long-Term Care and Developmental Disabilities (41) *Sandy A. Stemp, Sandy Keshen*
- Behavioral Assessment of Problem Behaviors in Elderly Residents of a Personal Care Home (42) *Andrea Piotrowski, Stephen W. Holborn*

Theme: **Approaches to Maintaining the Frail Elderly in the Community**

Chair: Tracey LaPierre

Room: Turner Valley

- The Victoria Geriatric Outcomes Evaluation Study (43) *Ted Rosenberg, Holly A. Tuokko*
- The Importance of Transportation and Prioritization of Environmental Needs to Sustain Well-Being Among Older Adults (44) *Yuri Cvitkovich, Andrew V. Wister*
- Telephone Follow-up with Protocols (45) *Lorraine H. Dawe, Beverly Theroux*
- A Day Health Centre for Veterans (46) *Elizabeth H. Harris, Duncan M. Robertson*
- Predictors of Client / Caregiver Adherence with the Recommendations of a Geriatric Day Hospital Program (47) *Faranak Aminzadeh, Stephanie Amos, Anna Byszewski, William B. Dalziel*
- Developing a Community-Based Outreach Program for Older Patients (48) *Brian J. Gleberzon*

## Round Tables

Room: Director

- The Benefits of Functional Fitness Testing for an Older Adult Community Setting (49) *Wendy T. Rodger*

Room: Private Dining Room

- The Arts in Later Life: Experience and Opportunities (50) *Pamela Brett, Marilyn L. Magid, Joy Coghill, Susan Summers*

## Symposium

Room: Manitoba/Saskatchewan

- A GUIDE for End-of-Life Care for Seniors (51) *Rory Fisher, Margaret M. Ross, Michael J. MacLean*

## Workshops

Room: Royal Suite

- Breaking Bad News (52) *Marie-Therese Cave, Jean Triscott, Allen R. Dobbs, B. Carstensen, Petrina Hough*

Room: Director

- COPA's Home Detoxification for Older Persons (53) *Eileen J. McKee, Marilyn White-Campbell*

Room: Imperial Suite

- Elder Abuse? Not Me: Personal Empowerment and Prevention (54) *Bea Gleason*

## Divisional Luncheons

Time: 12:15 - 13:45

The Division Chairs have each organized divisional luncheons this year in order to bring together members of their division to share common issues and concerns. Visit the Registration Desk for ticket availability.

Educational Gerontology  
Health and Biological Sciences  
Psychology  
Social Policy and Practice  
Social Sciences

Leduc Room  
Turner Valley Room  
Consulate Room  
Chairman Room  
Chancellor Room

## Poster Session II

Time: 14:00 - 16:00

Room: Exhibition Hall

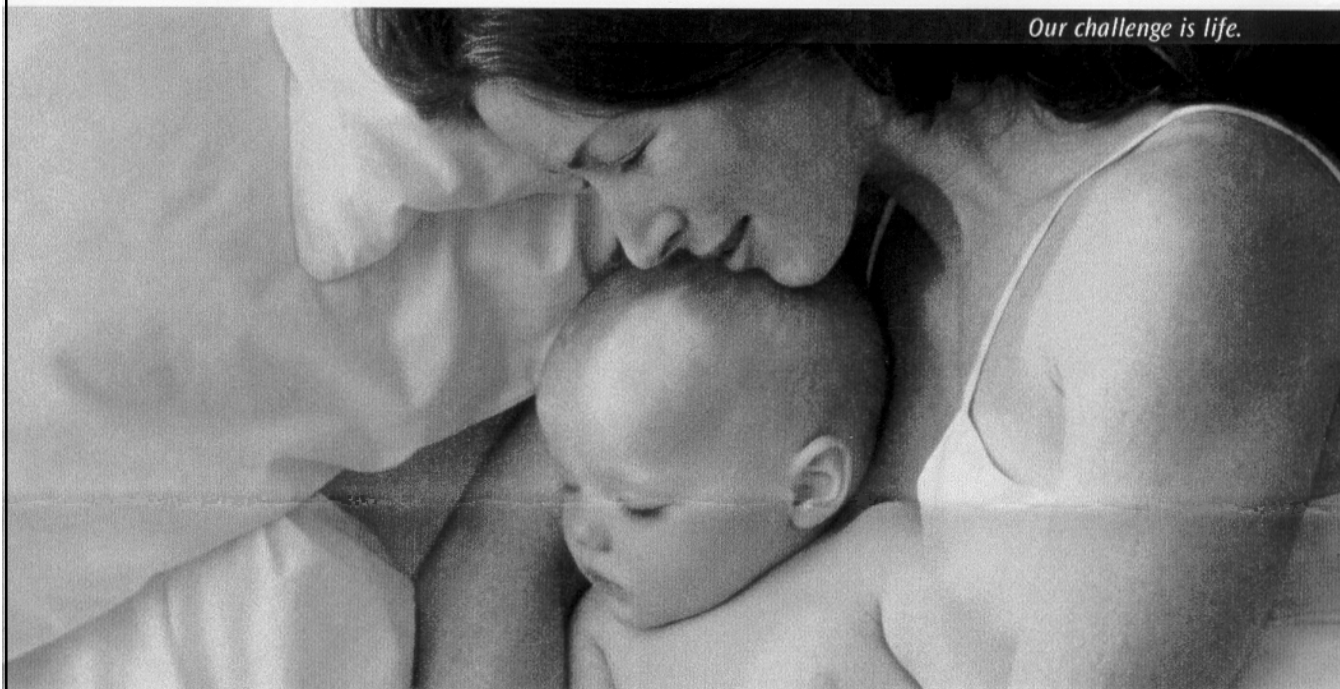
- 1 Informed Choice of Nursing Homes Supports Aging with Attitude (55) *Gillian Eades Telford, Anne Woodson*
- 2 Service Use Among Elderly Home Care Clients: Implications for the Acute Care Readmission Pathway (56) *Katharine Paddock, John P. Hirdes*
- 3 Impact of Medication Changes on the Quality of Life of a Patient with Advanced Parkinson's Disease (57) *Mary Joy, Andrea Moser*
- 4 Age-Related Differences in Physician and Hospital Utilization in British Columbia: 1990-1998 (58) *Carren E. Learning, Margaret J. Penning, Diane E. Allan*
- 5 Continence Promotion (59) *Debbie Lee, Linda Larsen, Frank MacDonald, Alison Mitchell*
- 6 The Effects of Physical Exercise and Educational Courses on Self-Rated Memory Difficulties in Older Adults (60) *Peter Laycock, Robert B. Heller, Allen R. Dobbs*
- 7 Evaluating Throughout a Service Model Change (61) *Robert McKim, Gillian Murphy, Sharon Warren, Linda McGeough*
- 8 Geriatric Flow Sheet (62) *Rose M. Merke, Jocelyne Nouque, Jasneet Parmar*
- 9 Keeping Patients with Parkinson's Disease Active in the Communication Loop and Safer Swallowing - Considerations for Assessment and Management Strategies (63) *Marc Paquette, Margo Butler*
- 10 Gender Differences in Physical Health and Depression Among Older Adults (64) *Julie C. Shaver, Margaret J. Penning*
- 11 A Geriatric Rehabilitation Care Path (65) *Suzanne M. Thille, Patrick R. Montgomery, Elizabeth M. Boustcha*
- 12 Stature and Functional Disability Among Canadian Women (66) *Vince S. Thomas*
- 13 Excess Functional Disability among Demented Subjects: Findings



*Aventis Pharma*



*Our challenge is life.*



*We do as much for the human spirit as we do for the body.*

In our eyes, the two go hand in hand. Working together. Nurturing each other. Much like the union between Rhône-Poulenc Rorer and Hoechst Marion Roussel. Under the name of Aventis Pharma, we've come together to bring products to a world in need of medical solutions. Our success in cardiology, oncology, bone metabolism, diabetes, allergy, rheumatology and anti-infectives has not only made us proud, it's emboldened our commitment to doing as much as we can for as many as possible.

Aventis Pharma.  
Dedicated to the spirit of life.

Aventis Pharma Inc. • 2150 St-Elzéar Blvd. W. • Laval, Québec • CANADA H7L 4A8



**Friday,  
October 27**

- 14 from the Canadian Study of Health & Aging (67) *Vince S. Thomas*  
Follow up of Medication Reviews in the St. Boniface Geriatric  
Day Hospital (68) *Cornelia H. van Ineveld, Patrick R.  
Montgomery, Jacky Chen*
- 15 Dizziness in the Elderly Patient (69) *Caroline E. Schnitzler,  
Donald Bakal*
- 16 Effects of Classical Music and White Noise on Agitated Behaviors  
in Residents with Dementia of the Lewy Body Type (70) *Brooke  
A. Olsen, Keith W. Carlson*
- 17 Cognitive and Emotional Changes in Parkinson's Disease (71)  
*Harvey Segal*
- 18 Interpretive Control in Chronic versus Acute Health Conditions  
in Older Adults (72) *Audrey U. Swift, Steve Hladkyj, Judith G.  
Chipperfield, Raymond P. Perry*
- 19 Age and Gender Differences in the Perceived Benefits of Social  
Contact and Communication With Others ("Vicarious Control")  
(73) *Audrey U. Swift, Steve Hladkyj, Judith G. Chipperfield,  
Raymond P. Perry*

## Divisional Session II

Time: 14:00 - 15:30

### Paper Sessions

Theme: **Staffing Issues in Continuing Care: Enhancing  
Quality of Care**

Chair: Georgina Fysh

Room: Chairman

- Perceptions of Home Care Worklife During Restructuring Changes  
(74) *Allison Williams, Monic Buettner, P. Susan Wagner*
- Absenteeism in Nursing Staff at a Chronic Care Hospital: A  
Longitudinal Study (75) *Nancy J. Martin, Deb E. Raney*
- Staff Ratios and Resident Outcomes in Special Care Units: Do  
Activity Aides Make a Difference? (76) *Colin Reid, Neena L.  
Chappell*
- Community Care to Seniors - Enhancing Quality by Serving  
Staff (77) *Ann M. Keane*
- "Readiness for Change" as a Prerequisite to New Programming  
in Institutional Care (78) *Maggie Gibson, Dave Jones, Nancy  
Bol*

Theme: **Confronting Vulnerability and Abuse**

Chair: Charmaine Spencer

Room: Chancellor

- The Exploitation of Older Adults from the Perspective of Front-  
Line Health and Social Service Providers (79) *Maxine Lithwick*
- Personhood Within Long-Term Facilities: An Unexpected Finding  
(80) *Sandra P. Hirst*
- Resource Nurse to Elder Abuse Team (81) *Joan I.J. Wagner,  
Barbara J. Mahaffey*
- Raising Awareness of Elder Abuse in Faith Communities (82)  
*Elizabeth Podnieks, Stephanie Speer*
- Exploring the Social and Economic Costs of Abuse in Later Life  
(83) *Charmaine Spencer*

Theme: **Geriatric Assessment Delivery Models: How to Adjust  
to Evolving Needs**

Chair: Margaret Denton

Room: Consulate

- Introduction of a Geriatric Assessment Team in an Inner City  
Community and Tertiary Care Hospital (84) *Phil St. John,*

*Kathleen Burke, Debra Chapman, Nick Chebenko, Patti Ringer*

- Developing a Structured Consultation Assessment Tool: A  
Partnership Between Geriatricians and Advanced Practice Nurses  
(CNS) (85) *Dianne Rossy, Kathleen Smid, Anna Byszewski,  
Stephanie Amos*
- The Reorganization of a Community Geriatric Assessment  
Program Under Budgetary Constraints (86) *Ted Rosenberg, Vicki  
McNulty, David Brook*
- An Integrated Approach to Outpatient Geriatric Care: Strategies  
for Building Partnerships (87) *Eivor O. Barrett, Cheryl A. Wiens,  
Teresa Genge, Gayle Subchuk*
- Strategies for Implementing an Interdisciplinary Geriatric Team:  
Overcoming Processual Challenges (88) *Eivor O. Barrett, Teresa  
Genge, Gwen Beatty, Gail Subchuk*

Theme: **Older Workers and Retirement**

Chair: Anne Sclater

Room: Athabasca

- Why is the Older Worker Special? (89) *Lynda Blach, Robert  
Torkelson*
- The Employment-Seeking Process of Older Workers: The  
Challenges of Age Discrimination (90) *Ellie D. Berger*
- Aging With the Right Attitude: What is the Effect of Aging on  
Alberta's Workers' Compensation Claims? (91) *Tina H. Wu*
- Factors Influencing Psychological Well-Being During Retirement  
(92) *Cathleen Desrochers, Sylvie Lapierre*
- Transition to Retirement - An Alternate View from "Over the  
Hill" (93) *Judith Frederick, Janet E. Fast*

Theme: **Supportive Housing for the Frail Elderly**

Chair: Corinne Schalm

Room: Turner Valley

- Environment Affects Health Outcomes for Elderly in Care (94)  
*Val A. Wilson*
- Issues and Challenges Facing Manitoba's Supportive Housing  
Initiative (95) *Laurel Strain, Carmen Grabusic, Eckhard Goerz*
- An Evaluation of the Impact of Preventive Home Care and Senior  
Social Housing (96) *Kelly Chessie, Laurie Thompson*
- Laurier House: A Unique Alternative to Traditional Continuing  
Care Centres (97) *Cathie M. Gillespie, Claudette Williams, Helen  
Lantz, Connie F. Wark*
- Laurier House Evaluation: A Life-Lease Model of Continuing  
Care - Unbundling Costs for Health, Support, and Housing  
Services (98) *Doris L. Milke, Tara Walsh, Sonia M. Parker,  
Helen Lantz, Kathie Gillespie, Alice Sears*
- Adult Housing: A Continuing Care Initiative for the Next  
Millennium (99) *Kirby A. White, Warren J. Robson*

Theme: **Neuropsychological Assessment and Diagnostic Issues**

Chair: Kate Oakley

Room: Leduc

- Cognitive Loss in Older Adults: Clinician Judgment and Cognitive  
Test Performance (100) *Robert Frerichs, Holly A. Tuokko*
- The Clock Test: What Does a Poor Performance Mean? (101)  
*Patrick J. Corney, Holly A. Tuokko*
- Longitudinal Predictors of Current Self-Reported Health and  
Memory Function (102) *Robert B. Heller, Sheree Kwong See,  
Allen R. Dobbs*
- Why are Self-Restrictions in Driving not an Effective Strategy  
for Managing the Crash Rates of Older Drivers? (103) *Bonnie M.  
Dobbs*
- Development of a Scale to Assess Safety of Cognitively Impaired  
Seniors Living in the Community: A National Study (104) *Lili  
Liu, Louise Poulin de Courval, David Gayton, Serge Gauthier*



# Exelon can make a difference in patients with Alzheimer Disease



## The only dual-acting cholinesterase inhibitor†

EXELON can help enhance cholinergic activity in the brain by inhibiting acetylcholinesterase. In addition, EXELON also inhibits butyrylcholinesterase.

## Proven efficacy†† in 3 key domains – the ABCs of Alzheimer Disease

Activities of Daily Living were maintained or improved with a mean difference of more than 3 points vs. placebo on the PDS ( $p < 0.05$ ).<sup>1‡</sup>

Behaviour and other parameters of global functioning assessed on the CIBIC-Plus were significantly improved vs. placebo ( $p < 0.05$ ).<sup>2,§</sup>

Cognitive function was maintained or enhanced by a mean difference of almost 5 points vs. placebo on the ADAS-Cog ( $p < 0.001$ ).<sup>3,¶</sup>

† Comparative clinical significance has not been established

†† Based on EXELON dosages of 6-12 mg/day

‡ Double-blind, randomized, placebo-controlled, international multicentre clinical trial;  $n=725$ .

PDS=Progressive Deterioration Scale.

§ Pooled results from three prospective, randomized, double-blind, placebo-controlled, international multicentre clinical trials;  $n=2126$ . CIBIC-Plus=Clinician Interview-Based Impression of Change Scale.

¶ Prospective, randomized, double-blind, placebo-controlled, clinical trial;  $n=699$ . ADAS-Cog=Alzheimer Disease Assessment Scale, Cognitive Subscale.

Product Monograph available upon request.

\*Registered trademark  
EXE-00-06-4938E

 **NOVARTIS**

Novartis Pharmaceuticals Canada Inc.  
Dorval, Québec H9S 1A9

Member  
 

## Individualized Dosing

Dosing can be individualized to help optimize the therapeutic response. The suggested starting dose is 1.5 mg b.i.d. (3 mg/day), with the daily dose increased in 3 mg increments every 4 weeks.<sup>1†</sup> Usual maintenance therapy is administered as 3-6 mg b.i.d. (6-12 mg/day) with morning and evening meals.

## Now, EXELON can help many of your patients with Alzheimer Disease look forward to staying at home a while longer.

EXELON (rivastigmine as the hydrogen tartrate salt) is indicated for the symptomatic treatment of mild to moderate dementia of the Alzheimer type.

The most common side effects associated with EXELON therapy are generally mild and of short duration, occur mainly in the titration phase, and usually subside with continued treatment. During maintenance therapy, the most common side effects at doses of 6-12 mg/day were nausea (15%), vomiting (14%) and dizziness (10%).

† Dose increases can be considered after a minimum of two weeks, as tolerated. Dose increases above 6 mg/day should proceed cautiously. The maximum dose should not exceed 6 mg b.i.d. For elderly patients (> 85 years old) with low body weight (especially females) or serious comorbid diseases, it is recommended to start treatment with less frequent dosing (1.5 mg once a day) and to escalate dosage at a slower rate.

EXELON has not been studied in controlled clinical trials for longer than 6 months. There is no evidence that rivastigmine alters the course of the underlying dementing process.

1. Rösler M, Anand R, Cicin-Sain A, et al. *BMJ* 1999;318:633-40.

2. Schneider LS, Anand R, Farlow MR. *Int J Geriatr Psychopharm* 1998;Suppl(1):S1-S34.

3. Corey-Bloom J, Anand R, Veach J. *Int J Geriatr Psychopharm* 1998;1:55-65.

4. Exelon Product Monograph, April 13, 2000, Novartis Pharmaceuticals Canada Inc.

**DUAL ACTING**  
  
(rivastigmine)

**To Help Preserve Independence**





Friday,  
October 27

## Round Table

Room: Private Dining Room

- Everyday Technology and Older Adults: Friends or Foes? (105) *Jeannine L. Jessome, Marlene M. MacLellan, Sheila Laidlaw, Don King, Clare Parks*

## Symposia

Room: Strathcona

- Development and Validation of Screening and Assessment Tools for Family Caregivers (106) *Nancy Guberman, Janice M. Keefe, Pamela J. Fancey, Daphne Nahmiash, Lucy Barylak*

Room: Manitoba/Saskatchewan

- Creating Evidence-Based Canadian Consensus on Issues of Seniors' Independence: The Challenges and the Opportunities (107) *Carol L. McWilliam, Louise A. Plouffe, Bruce Mutch, Gloria M. Gutman, Margaret Penning, Miriam Stewart, Robyn Tamblyn*

## Workshops

Room: Royal Suite

- Adapting Physical Activity from Frail to Fit: What Keeps Them Coming Back for More? (108) *Jennifer Hystad, Allison Bonner, June Hole, Arlaine Monaghan*

Room: Imperial Suite

- Developing Indicators for Regional Management of Facility-Based Long-Term Care (109) *Catherine A. McAuley*

Room: Director

- Tele-Geriatrics in Alberta: Past, Present and Future (110) *Peter N. McCracken, Kathleen Hunter McIlveen, Diane Chalifoux, Agnes Barabas, Sharon Drury*

## Break / Exhibits

Time: 15:30 - 16:00

Location: Exhibition Hall

Complimentary coffee and tea are available in the Exhibition Hall.

## Meet the CJA Editors

Time: 15:30 - 16:00

Location: Leduc

The Editor-in-Chief and Section Editors of the Canadian Journal on Aging will be available to answer questions concerning the Journal and its review process, and to informally discuss plans for the coming year.

## Annual General Meeting

Time: 16:00 - 17:30

Location: Manitoba/Saskatchewan

The agenda and documents were sent to members in August. Additional copies are available. All delegates are encouraged to attend.

## Student Event

Time: 17:30

Location: Meet in the Westin lobby

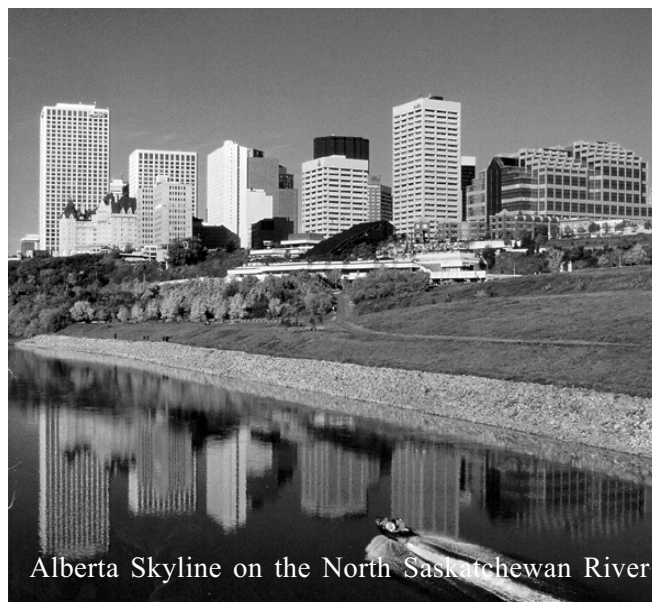
*An Evening on the Town* - Beginning at 17:30, Friday evening will be a night out on the town - a guaranteed good time! You are responsible for your own costs.

## AAG Reception

Time: 17:30 - 19:00

Location: Turner Valley

The Alberta Association on Gerontology cordially invites all CAG conference delegates to join them for a reception. Please see the flyer in your conference kit for further details.



Alberta Skyline on the North Saskatchewan River

## We Care Home Health Services

### Taking Care In Every Way

Professional  
nursing and  
home support  
services...  
when and where  
you need us...  
24 hours a day,  
7 days a week.



*Serving Over 200 Communities Across Canada*



**wecare™**

Home Health Services

**1-888-429-3227**

**www.wecare.ca**

*Where peace of mind has a home address™*



Some people respect their elders.  
Others have a tireless dedication to them.

SmithKline Beecham Pharma salutes members of CAG  
and their ongoing endeavors to increase the quality of life for aging  
Canadians everywhere.

As a provider of innovative products that help Canada's aging  
population, we are a proud participant in the CAG Conference.

**SB**  
**SmithKline Beecham**  
Pharma  
pioneering solutions  
for a healthy tomorrow

## Notes



# Saturday, October 28

## Complimentary Breakfast Tour

### Alberta Life Care Housing Foundation

Time: 7:00 - 8:15

Location: Meet in the Westin Lobby

Alberta Life Care Housing Foundation invites you to join in on a complimentary breakfast tour Saturday morning, 7:00 to 8:15 am to view an affordable new age facility in south Edmonton. This may be YOUR home of the future, although there are 55 people already on the waiting list. A free 24-passenger bus (4 wheelchairs are welcome) will take you in comfort to the beautiful residence which is home to 165 older adults. See how 25,000 square feet of recreation and leisure space keeps 140 residents healthy and happy. Trained in recreation and leisure studies, Renate Sainsbury fosters an independent living approach using a community empowerment approach to guide living policies and services. A must see if you are dreaming of your own retirement. Sign up at the registration desk. For more information call Renate Sainsbury at (780) 437-7171.

## Divisional Session III

Time: 8:30 -10:00

### Paper Sessions

#### Theme: Falls and Injury Prevention

Chair: Nancy Edwards

Room: Chairman

- Study of Factors Associated with Fall-related Injuries Among Frail Older Adults (111) *Victoria J. Scott*
- Fall Prevention for Community Living Seniors (112) *Frank MacDonald, Barbara Metcalf*
- Living at Home with Peace of Mind: An Emergency Response System as a Key Piece in a Comprehensive Program to Manage the Risk of Falls (113) *Erika J. Lavigne, Evelyn M. Maloney*
- Compliance with the Use of PROHIP Hip Protectors in a Long Term Care Setting (114) *Barry S. Clarke, Rebecca O. King, Patricia Manthorne, Karen Stadnyk*

#### Theme: Challenges Facing Informal Caregivers

Chair: Carolyn Rosenthal

Room: Chancellor

- Well-Being and Self-Esteem Among Informal Caregivers (115) *Neena L. Chappell, Colin Reid*
- Experiences of Informal Family Care: Does Place Matter? (116) *Janine Wiles, Mark W. Rosenberg*
- Friends and Neighbours as Distinct Groups of Informal Caregivers for the Frail Elderly (117) *Tracey A. LaPierre*
- Demands and Resources Related to the Institution-Based Caregiving Role (118) *Sherry L. Dupuis*

#### Theme: New Directions in Long Term Care Services

Chair: Lori Campbell

Room: Strathcona

- Non-Profit and For-Profit Health Care Firms in a Managed Competition Environment: Are They Competing on a Level Playing Field? (119) *Laura H. Schlaht, Joseph A. Tindale*
- Variance in the 'Managed Competition' Experiences of Non-Profit and For-Profit Community Health Care Agencies (120) *Laura M. Visser, Joseph A. Tindale*
- A Quest for Quality: Implementing a Regional Quality Monitoring & Improvement Program for Long Term Care Services (121) *Netha Dyck*
- Take a Walk in My Shoes - Peer Review in Action (122) *Betty D. Thompson, Queenie Choo*
- New Horizons: How Do We Meet the Changing Needs in the Community in Continuing Care (123) *Tracey Neil, Donna Hayne, Kim Spiller*

#### Theme: New Directions in Supporting and Assessing Mental Health for Older Adults

Chair: Norm O'Rourke

Room: Athabasca

- An Innovative Mental Health Program for Seniors (124) *Linda Balt, Eleanor Grant*
- Seniors' Mental Health Issues - A Model of Integrated Response From Home Care and Mental Health (125) *Debye A. Macdonald Connolly, Anne M. Neatby, Betty A. McNab, Howard D. Zacharias*
- Cognitive Functioning Pre- and Post-Treatment for Depression: Measuring the Effect of Depression on Cognitive Functioning Among Elderly Patients with Premorbid Neurological Impairment (126) *Louise Patrick, Daniel Rexroth*
- Development and Validation of l'échelle d'émblissement conjugal (127) *Norm O'Rourke, Philippe Cappelliez, Roxanne Barrette*

### Round Table

Room: Private Dining Room

- Canadian Network for the Prevention of Elder Abuse: Two Years Later (128) *Elizabeth Podnieks, Rod McKendrick, Maxine Lithwick, Elizabeth Dow, Ann Soden, Jill Hightower, Gloria Dixon, Anne Angel*

### Symposia

Room: Manitoba/Saskatchewan

- Outside the Bucket: Environmental Design, Products and Finishes that Reflect 'Residence' not 'Institution' (129) *Laurie E. Gudmundsson-Egler, Douglas Sollows, Robert Lederer, Tyler Amell, Jennifer Greenwood Klein*

Room: Turner Valley

- Healthy Attitudes: A "Medically Necessary" Prescription for Change (130) *Jean E. Innes, Margaret MacLean, Wanda Cree, Donald Milne, Catherine Ryan*

Room: Leduc

- Clinical, Policy and Practical Issues in Evaluating the Medically At-Risk Older Driver (131) *Germaine Odenheimer, Bonnie M. Dobbs, Kent Milton, Allen R. Dobbs*





Saturday,  
October 28

## Workshops

Room: Consulate

- Demystifying the Interdisciplinary Management of Advanced Parkinsons Disease (132) *Leslie Coxall, Andrea Moser, Mary Joy*

Room: Royal Suite

- Acting Our Age...Older Adults Engaged in Physical Activity (133) *Jennifer L. Hystad*

Room: Imperial Suite

- The Alberta Broda Report - The Mother of All Policy Proposals (134) *Peter N. McCracken, Darryl B. Rolfson, Mary Engelmann*

## Break / Exhibits

Time: 10:00 - 10:30

Room: Exhibition Hall

Complimentary coffee and tea are available in the Exhibition Hall.

## Audio-Visual Session

Time: 10:30 - 12:00

Room: Director

- Extending Sexual Satisfaction Into Older Age (135) *Linda Hopper Cook*
- Listening to Soul Pain (136) *Joan I.J. Wagner, Jane Simington*

## Poster Session III

Time: 10:00 - 12:00

Room: Exhibition Hall

- 1 Attitudes, Perceptions and Behaviours of Staff Caring for Older Adults with Dementia in Continuing Care Settings (137) *Corinna Andiel, Sharon Warren, Wonita Janzen, Allen Dobbs*
- 2 Social Marketing Campaign to Improve the Quality of Medication Use Among Seniors in the Capital Health Region (138) *Karen Farris, Sheri Maddigan, Sarah Barber, Cheryl Cox*
- 3 Primary Care Health Care Teams: A Focus on Improving Medication Use (139) *Karen Farris, David Feeny, Jeffrey Johnson, Ross Tsuyuki*
- 4 Actual and Subjective Perceptions of Functional Changes Over Eight Years as Predictors of Well-Being (140) *Barbara M. Gfellner, John C. Everitt*
- 5 Taking Research into Gerontological Practice: Delegation (141) *Sandra P. Hirst, Lynda Foley, Shelley Raffin*
- 6 Family Perceptions of Continuing Care for People with Alzheimer Disease (142) *Wonita Janzen, Sharon Warren*
- 7 Functional Status of Persons with Alzheimer Disease in a Residential Care Centre Compared to Special Care Units (143) *Sharon Warren, Wonita Janzen, Corinna Andiel, Lili Liu*
- 8 Factors Influential to Falls Within a 200-bed LTC Facility: 4-Years of Retrospective Analysis of Fall Incidents (144) *Sheril Desjardins-Denault, Ineke Neutel, David Dalle, Camille Hubert, Hélène Tasse*
- 9 Interrater Reliability of the Global Assessment Functioning in a Geriatric Population (145) *Roger W. Hildebrand, Monty K. Nelson, Peter Wass, Erin McCann*

# CSA International

Making standards work for an aging society.

CSA International is dedicated to creating a leading forum for addressing aging issues in standardization, both in Canada and around the world.

To learn more about our Strategic Advisory Group on Aging visit us on the web at

[www.csa-international.org](http://www.csa-international.org)

OR CALL 1-800-463-6727



CSA INTERNATIONAL

Standards  
Development

QMI  
Management Systems Registration

Certification  
and Testing

® Registered trade-mark of Canadian Standards Association



**Saturday,  
October 28**

- 10 Difficulties and Challenges of Interveners Working with Elderly (146) *Danielle Maltais, Suzie Robichaud, Anne Simard*
- 11 The Psychological After-Effects of the Ice Storm According to the Accommodation Emergency (147) *Danielle Maltais, Suzie Robichaud, Anne Simard*
- 12 In and Out of Hospital: A Senior's Guide for Your Stay in Hospital and Return Home (148) *Dianne McConkey, Dianne Rossy, Jean McKibbin*
- 13 Comparison of Functional Levels at Discharge to Home Following Total Hip or Knee Arthroplasty (149) *Lauren A. Beaupre, C. Allyson Jones, John G. Cinats*
- 14 Implantation communautaire d'activités éducatives en matière de nutrition comme facteur de protection dans les troubles de santé chez les personnes âgées (150) *Christian T. Chénard*
- 15 Quality of Life Measures for People Experiencing Middle to Late Stage Dementia Key Word Classification (151) *Susan Slaughter, Gillian Currie, Cameron Donaldson, Marlene Reimer*
- 16 Réflexion sur les changements rapides et profonds dans toutes les sphères d'activités humaines (152) *Lucien Saint-Arneault, Yolande Saint-Arneault*
- 17 Validity and Reliability of the SF-36 for Geriatric In-patients and Out-patients (153) *Ted Rosenberg, Tanya Berrang, David Brook*
- 18 Activité physique et santé: Une analyse des discours de francophones aînées d'origine portugaise (154) *Josianne Roma, Geneviève Rail, Suzanne Laberge, Hélène Dallaire*
- 19 Well-being and Isolation: A Comparison of Rural and Urban Communities in Ontario (155) *Kathryn Oakley*

## Divisional Session IV

Time: 14:00 - 16:30

### Paper Sessions

Theme: **Economic Well-Being in Later Life**

Chair: Laurel Strain

Room: Chairman

- Reflexive Planning for Later Life: A Conceptual Model and Evidence from Canada (156) *Margaret A. Denton, Susan French, Amiram Gafni, Anju Joshi*
- A Life-Course Model of Economic Status in Later Life: A Structural Approach (157) *Steven G. Prus*
- Fiscal Welfare For The Elderly: How Safe is the Safety Net (158) *Greg M. Auton, Margaret A. Denton*
- The Economic Well-Being of Women Who Become Divorced or Separated in Mid and Later Life (159) *Sharon C. Webb, Margaret A. Denton*

Theme: **Confronting the Costs of Care**

Chair: Betty Havens

Room: Chancellor

- The Economic Impact of Social Policies on Informal Caregivers: A Case Study Approach (160) *Norah C. Keating, Jacquie Eales, Janet E. Fast*
- Informal Caring in the Context of Manitoba Health Care Reform: Hidden Casualties (161) *Barbara J. Payne, Karen R. Grant, David Gregory*
- A Matter of Time: The True Cost of Eldercare (162) *Janet E. Fast, Norah C. Keating, Dorothy A. Forbes*
- The Economic Value of Spousal Care: Savings for the Formal System (163) *Roberta E. Robb, Lynda M. Hayward, Sharon C. Webb, Margaret A. Denton*

- Seniors' Out-of-Pocket Health Expenses - Les dépenses directes en santé encou (164) *Patricia Raymaker*

Theme: **Nutrition and Health for Older Canadians**

Chair: Shanthi Johnson

Room: Consulate

- Senior Friendly Grocery Stores & Nutrition (165) *Jayne Thirsk, Jan Reimer*
- Use of Alternative Health Products by Older Canadians (166) *Ineke Neutel, Wikke Walop, Jean Kozak*
- Nutritional Support for Bereaved Seniors (167) *Shanthi C. Johnson*
- Linking Long Term Care Food Services to Residents' Feelings of "Home" and "Respect" (168) *Gale E. West, Denise Ouellet*
- An Exploratory Study that Examines Changes in Body Weight with Results from a Veteran's Satisfaction Questionnaire re: Food Quality in a LTC Facility (169) *Cristina M. Lovett-Smith, Maureen Gorman*

Theme: **Towards Best Practice and Functional Gains**

Chair: Christine Knight

Room: Director

- Patient Perspectives on Physical Therapy: Does Age Make a Difference? (170) *Allison L. McKinnon, Jennifer Rees*
- Anxiety and Perceived Risk: An Examination of Older Cardiac Rehabilitation Patients' Attitudes Towards Exercise (171) *Christine A. Knight, Michael J. Stones, Lee Stones*
- G.E.T. S.E.T. (Stretching, Exercise and Teaching) Program (172) *Kathy Tam, Jennifer Rees, Pamela Rock*

Theme: **End of Life Issues**

Chair: John Bond

Room: Leduc

- End of Life Care in a Personal Care Home Setting (173) *John B. Bond Jr., Donna M. Goodridge, Cynthia F. Cameron, Elizabeth McKean*
- Researching Utilization of Hospitals by Terminally Ill and Dying Persons: Refuting Myths and Misconceptions (174) *Donna M. Wilson, Corrine D. Truman*
- Family Bereavement Support: Developing an Evidence-Based Program (175) *Kathleen M. Davidson, Heath W. Miller*
- The Role of the Psychologist in Determining Competence for Assisted Suicide / Euthanasia in the Terminally Ill (176) *Kim M. Galbraith, Keith S. Dobson*
- Dying Well in Rural Canada: A Policy Challenge (177) *Mary Lou Kelley*

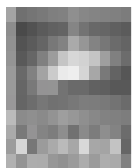
Theme: **On the Front Lines of Dementia**

Chair: Doris Milke

Room: Athabasca

- Dementia Care in Rural Long-Term Care Facilities: Integration vs. Segregation (178) *Debra G. Morgan, Karen M. Semchuk, Norma J. Stewart, Carl D'Arcy*
- Changes and Challenges in Dementia Care: A Report from the Front Lines (179) *Nancy J. Gnaedinger, Marcy Cohen*
- Predictors and Incidence of Urinary Incontinence in Elderly Canadians With and Without Dementia - A 5 Year Follow up: The Canadian Study of Health and Aging (180) *Truls Ostbye, Steinar Hunskaar, Elizabeth Sykes*
- Canada's First Comprehensive Provincial Alzheimer Strategy (181) *Laura A. Pisko-Bezruchko, Elizabeth Esteves*
- Reliability and Validity Testing of a Feeding Abilities Assessment (FAA) for Persons with Dementia (182) *Donna L. Wells, Chantale LeClerc, Souraya Sidani, Pam Dawson*

**T**he following information was provided by the author of the paper presented at the 2000 Annual Scientific and Educational Meeting of the American Society of Human Genetics, which was held in San Francisco, California, on November 12-13, 2000. The author is Dr. [Name], who is currently a [Position] at [Institution]. The paper was presented at the [Session] of the meeting, which was held in the [Room] of the [Hotel]. The author is grateful to the [Organization] for their support of this research.



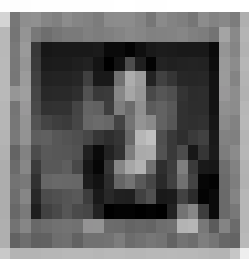
**Abstract:** The purpose of this study was to determine the effect of [Factor] on [Outcome]. The study was conducted in a [Location] and involved [Number] subjects. The results of the study are presented in the following table.

**Introduction:** The purpose of this study was to determine the effect of [Factor] on [Outcome]. The study was conducted in a [Location] and involved [Number] subjects. The results of the study are presented in the following table.

**Methods:** The study was conducted in a [Location] and involved [Number] subjects. The results of the study are presented in the following table.



## Abstract



**Keywords:** [Keywords]

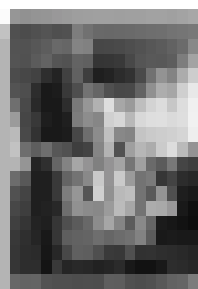
**Background:** The purpose of this study was to determine the effect of [Factor] on [Outcome]. The study was conducted in a [Location] and involved [Number] subjects. The results of the study are presented in the following table.

**Results:** The study was conducted in a [Location] and involved [Number] subjects. The results of the study are presented in the following table.



**Conclusion:** The study was conducted in a [Location] and involved [Number] subjects. The results of the study are presented in the following table.

**References:** [References]



**Keywords:** [Keywords]

**Background:** The purpose of this study was to determine the effect of [Factor] on [Outcome]. The study was conducted in a [Location] and involved [Number] subjects. The results of the study are presented in the following table.

**Methods:** The study was conducted in a [Location] and involved [Number] subjects. The results of the study are presented in the following table.

**Results:** The study was conducted in a [Location] and involved [Number] subjects. The results of the study are presented in the following table.



**Conclusion:** The study was conducted in a [Location] and involved [Number] subjects. The results of the study are presented in the following table.

**References:** [References]

[Text]

[Text]





Saturday,  
October 28

## Round Table

Room: Private Dining Room

- From Good Intentions to Good Practice (183) *Duncan Robertson, M. Jane Zaiane*

## Symposia

Room: Strathcona

- Pragma to Praxis: Computerized Resident Documentation in Continuing Care (184) *Debra F. Elm, June Rock, Linda Forster, Dan Wold, Betsey Williams, Edythe Andison*

Room: Manitoba/Saskatchewan

- Diversity in Intergenerational Relations: Structural Features of Later Life Families in Canada and Britain (185) *Anne Martin-Matthews, Karen M. Kobayashi, Carolyn J. Rosenthal, Judith Phillips, Ingrid Connidis*

Room: Turner Valley

- Geographical Aspects of Aging (186) *Lynda M. Hayward, Anthony M. Warnes, Eric G. Moore, Mark W. Rosenberg, Donald McGuinness, Michael Pacey, John C. Everitt, Barbara M. Gfeller, Geoffrey C. Smith, Gina M. Sylvestre*

## Workshops

Room: Royal Suite

- The Eden Alternative (187) *Cheryl L. George, Penny Leverick*

Room: Imperial Suite

- The Fit to Really Live Program & Its Expansion: Training Instructors to Implement a Fitness Program for Frail Older Adults through Caregivers. (188) *Gabriel Blouin, Catherine Morisset*

## Saturday Lunch Refresher Walk

Time: 12:00 - 13:00

Location: Meet in the Westin lobby

This is a free one-hour walking tour. Meet in the Westin lobby by 12 noon to be greeted by a member of The Churchill staff. You will be given a two block walk north on Churchill Square with a guide pointing out city landmarks. You will then enjoy an inside tour of The Churchill, a new concept in elegant supportive community living with complimentary coffee and dessert. An escorted walk back to the Westin will take you through the “underground” Pedway system that is the active living link for many seniors during the winter months. A signup sheet will be available at the registration desk or call Pat Chorney at (780) 420-1222. Leave your name and hotel room number.

## The President's Luncheon

Time: 12:15 - 13:45

Location: Marlboro Room



Please join the CAG President, Dr. Pierre Soucie, for lunch. Individuals will be recognized for their contributions to both the CAG and the field of gerontology. Presentations will be made to: Lynn McDonald, recipient of the CAG Distinguished Member Award; and Trisha Gavin, recipient of the CAG Donald Menzies Award.

## Divisional Session V

Time: 14:00 - 15:30

## Paper Sessions

Theme: **Supporting Informal Caregivers**

Chair: Allison McKinnon

Room: Chairman

- Caregivers Deserve a Break (189) *Peggy M. MacLeod, Beverly Peterson*
- Program Evaluation of Support Groups for (1) Caregivers (only) and for (2) Patients and Caregivers Using a Logic Model for Conceptualizing Program Planning, Implementation and Evaluation of Short and Long Term Outcome Objectives (190) *Maureen Gorman, Marilynn Grant, Bonnie Carlson, Laureen Morley*
- Health Care Providers' Strategies for Supporting Informal Caregivers (191) *Pamela G. Hawranik, Laurel A. Strain*
- A Study of Perceived Support Needs of Family Caregivers (192) *Jenny Ploeg, Laurie Biehler, Kathleen Willison, Brian Hutchison*
- Peer Helper Experiences in Providing Social Support to Family Caregivers of Seniors with Chronic Conditions (193) *Miriam J. Stewart, Allison L. McKinnon, Anne Neufeld, Lili Liu*

Theme: **Taking Control in Later Life**

Chair: Mary Lou Kelley

Room: Chancellor

- Age, Socioeconomic Status and Mastery (194) *John Cairney*
- Perceived Control over Future Functional Ability: Who, How Much, and Why? (195) *Leah E. Weinberg*
- Individual Perceptions of Control: Gender Differences in Predicting Self-Care Among Community-Dwelling Seniors (196) *Laura M. Funk, Margaret J. Penning, Diane E. Allan*
- Stability and Change in Perceptions of Control: Implications for Use of Health Services Among Older Adults (197) *Darren W. Campbell, Judith G. Chipperfield*
- Distance Education: Examining the Technological Barriers of the Older Learner (198) *Selena M. Santi*

Theme: **Off the Beaten Track: New Options in Health and Illness Management**

Chair: Brian Gieberzon

Room: Consulate

- Medical Comorbidity Among Geriatric Rehabilitation Patients: Defining the Nature and Severity of Cumulative Illness (199) *Louise Patrick, Peter Gaskovski, Daniel Rexroth*
- Implementation and Evaluation of the Chronic Disease Self-Management Program in Vancouver and Richmond (200) *Patrick T. McGowan, Barbara Henn-Pander*
- Demystifying the Interdisciplinary Management of Advanced Parkinson's Disease: Experiences from Parkinson's Program SCO Health Services (201) *Andrea Moser, Mary Joy*
- Understanding Seniors Medication-Taking Practices Through Empowerment Education (202) *Jennifer L. Hystad*
- Identifying Predictors of Success, Failure and Error Rates in a Geriatric Self-Medication Program: A Retrospective Chart Review (203) *Sheri L. Maddigan, Karen B. Farris*

Searle / Pharmacia Ad



**Saturday,  
October 28**

**Theme: Caregiving Partnerships**

**Chair: Sherry Anne Chapman**

**Room: Athabasca**

- Rural - Urban Differences in Receiving Assistance (204) *Janice M. Keefe*
- The Shift to Ambulatory Care: Who Assumes Care when the Patient is Discharged? (205) *Nancy Guberman, Eric Gagnon, Denyse Côté, Marielle Tremblay, Nicole Thiverge*
- Creating Flexible Client-Driven In-Home Care to Optimize Seniors' Independence: Challenges, Opportunities and Strategies (206) *Carol L. McWilliam, Kathryn L. Desai*
- Building Relationships Between Nurses and Family Members of Veterans in Long Term Care: A Critical Analysis (207) *Catherine Ward-Griffin, Nancy Bol*
- Enhanced Care Management in the Comox Valley, BC: Highlights from an Evaluation (208) *Nancy J. Gnaedinger, Sandie Somers, Susan Lanyon*

**Theme: Integrating and Disseminating Research on Aging**

**Chair: Mark Rosenberg**

**Room: Leduc**

- Linking Social Gerontological Research with Health Service Research: An Integrated Model Based on Cornell's Pathways to Life Quality Project (209) *Peter S.K. Chi*
- Strategies that Promote the Research Transfer and Uptake of Findings of a Systematic Research Overview (210) *Dorothy A. Forbes, Deborah Phillipchuk*
- Diversity in the Canadian Association on Gerontology: Some Exploratory Findings on Journal Publications and Conference Presentations (211) *Daniel W.L. Lai, Michelle Lowton*
- Development of the Eastern Ontario Long Term Care Research Consortium (212) *Ruth Boulianne, Eastern Ontario Long Term Care Research Consortium Facilities*

## Symposia

**Room: Strathcona**

- Methods for Evaluating Changes in Environments and Programs for Continuing Care Centre Residents with Dementia (213) *Doris Milke, Connie Wark, Olga Malott, Lucia Gamroth, Norma Stewart*

**Room: Manitoba/Saskatchewan**

- Steady As You Go: A Falls Prevention Program for Community Seniors - Design, Evaluation and Dissemination (SAYGO I for the Healthy - SAYGO II for the Frail) (214) *Ellie Robson, Joy Edwards, Jeanne Annett, Katherine Lechelt, Marion Small, Bev Billett*

## Workshops

**Room: Director**

- Food for Thought: The Dining Experience in Today's Nursing Home (215) *Sandra Colangelo, Margaret Plaizier*

**Room: Royal Suite**

- Driving Performance and the Elderly: Research and Practice Issues (216) *Don Kline, Bob Dewar, Allen Dobbs, Jeff Caird*

**Room: Imperial Suite**

- Reminiscence as a Way of Aging with Attitude: Story-Telling in the New Millennium (217) *Caroline LeNavenec, Outi McEachern*

**Room: Private Dining Room**

- The Many Faces of Elder Abuse (218) *Jeannette Wright, Lori Therrien, George Doerksen, Palle Nicolajsen*

**Room: Turner Valley**

- The National Framework on Aging - The Canadian Experience (219) *Dave Arsenault, Geri Hinton, Ann-Marie Julien, Valerie White*

# Every Home Has a Key.



## The Key To Their Next Home is *Knowledge*.

For older patients, moving from home can be a daunting task. It can seem every bit as daunting if you're their health care practitioner, and they ask your advice.

Fortunately, we can provide you with a free "Taking Charge" resource kit. It helps them to "take charge" of their next move, and gives you all the tools you need to help them make an informed decision. It includes a video for lending, three copies of a very informative booklet about the options and three copies of a Retirement Residence Checklist. This will help them determine exactly what services and facilities they'll want in their new home. ***To receive this free kit contact us via telephone, fax or email.***

  
LIFESTYLE  
Retirement Communities  
A SUBSIDIARY OF LONDON LIFE/GREAT WEST LIFE

600-50 Burnhamthorpe Rd. W.,  
Mississauga, ON, L5B 3C2  
Phone: (905) 270-0322 Fax: (905) 270-9331  
email: [marketing@lrc.ca](mailto:marketing@lrc.ca)

Ask about our locations in Toronto, Mississauga, Don Mills, Burlington, Oakville, Thornhill, Winnipeg, Vancouver, West Vancouver, Coquitlam, White Rock and Victoria.



Janssen Ortho Ad



Saturday,  
October 28

## Break / Exhibits

Time: 15:30 - 16:00

Location: Exhibition Hall

Complimentary coffee and tea are available in the Exhibition Hall

## Divisional Session VI

Time: 16:00 - 17:30

### Paper Sessions

Theme: **Intergenerational and Family Relationships**

Chair: Barry McPherson

Room: Chairman

- An Examination of 9th-Grade Students' Attitudes and Knowledge on Aging: Joining Generations (220) *Daphne Nahmiash, Iryna M. Dulka, Nancy Miller, Mark J. Yaffe*
- The Design and Content Evaluation of an Intergenerational Project: Strategies for Change (221) *Daphne Nahmiash, Nancy Miller, Iryna M. Dulka, Mark J. Yaffe*
- La Belle Family: Aging Stepfamilies in Canada (222) *Jessica Trim, Joan E. Norris, Joseph A. Tindale*
- Older Parents' Experiences and Perspectives on the Actual and Future Living Arrangements of their Adult Children with Disabilities (223) *Christine E. Joffres, Deborah Norris, Marlene M. MacLellan*

Theme: **Choices and Quality of Life in Residential Care**

Chair: Vicki Strang

Room: Chancellor

- Changing a Care Delivery System in Long-Term Care to Focus on Relationships: Results and Challenges (224) *Katherine S. McGilton, Linda L. O'Brien-Pallas, Dorothy M. Pringle*
- Implementing Choices in Client-Centred Care: Two Perspectives (225) *Norah C. Keating, Jacquie Eales, Sherry Anne Chapman*
- Satisfaction of Family Members and Veterans Residing in the QE2 Long Term Care Facility, Veterans Memorial Building: Results of 1999 Survey and some Comparisons with 1997 Survey Results (226) *Maureen Gorman, Barry S. Clarke*
- Implementation of a Least Restraint Philosophy in Continuing Care (227) *Iris M. Neumann, Tanya Hosryn, Darla Johnson, Jay van Bavel*
- Resident Groupings Improve the Quality of Life in Continuing Care (228) *Kathy Tam, Terry Holt*

Theme: **Overcoming Barriers and Challenges to Achieve Quality of Life**

Chair: Sandra Hirst

Room: Consulate

- Disability, Dependence, and Old Age: Problematic Constructions (229) *Sharon-dale Stone*
- Misconceptions of Aging and Being Old (230) *James E. Thornton*
- Women, Aging and Difference (231) *Amanda M. Grenier*
- The Strong Face of Age: How Seniors in Atlantic Canada Promote Positive Images of Aging (232) *Irene C. Rose, Mary Simpson, Phyllis Price*
- Strategies for Managing Aging and Chronic Illness: Are There Ways to Promote Aging with Attitude Among People with Chronic Illness (233) *Seanne Wilkins*

Theme: **Population Health Perspectives on Aging**

Chair: Joyce Springate

Room: Athabasca

- Health Outcomes of Seniors From the Population Health Perspective (234) *Satya Brink*
- Defining and Predicting Successful Aging (235) *Betsy Kristjansson, Ian McDowell, Richard Aylesworth, Andrea Karam*
- The Extended Self: Conceptions of Dysfunction and Independence Among Older Married Sufferers (236) *Peri Ballantyne*
- Gender and Health Status of Elderly Canadians: Findings from the 1998/9 National Population Health Survey (237) *Ellen M. Gee, Steven G. Prus*
- Aging in Manitoba Longitudinal Study: Selected Findings, 1971 - 2000 (238) *Betty Havens, Madelyn Hall*

Theme: **Future Needs for Health Care Professionals**

Chair: Dorothy Forbes

Room: Leduc

- Cause for Concern? Gerontological Content in Baccalaureate Nursing Programs (239) *Jennifer L. Baumbusch, Mary-Anne Andrusyszyn*
- Population Change and the Requirements for Physicians: The Case of Ontario (240) *Frank T. Denton, Amiram Gafni, Byron G. Spencer*
- Visiting Geriatrician Services to Northern Communities (241) *Phil St. John*
- Information Technology as a Tool for Chronic Disease Management (242) *Ralph Ulmer*

Theme: **Research Involving Older Respondents: Issues and Approaches**

Chair: Michael MacLean

Room: Turner Valley

- "Capturing Attitudes": Use of Focus Groups in an Evaluation Framework (243) *Gillian Murphy, Robert McKim, Sharon Warren, Linda McGeough*
- Research on Waiting for Nursing Home Placements: Potential Contributions, Phenomenological and Occupational Approaches (244) *Robin L. Stadnyk*
- Capturing the Voice of Older People: A Phenomenological Methodology (245) *Pamela J. Ralston*
- Obtaining Informed Consent from Continuing Care Residents: Issues and Recommendations (246) *Liza D. Dalzell, Candace A. Konnert, Keith S. Dobson*
- Ethical Issues and Procedures on Obtaining Consent and Assent in Persons Experiencing Dementia (247) *Dixie M. Cole, Marlene A. Reimer, Susan E. Slaughter, Eileen Jennings*

Theme: **Cross-Cultural and International Studies**

Chair: Karen Kobayashi

Room: Director

- No English, No Problem? Fraud in Ethnocultural Seniors' Communities (248) *Peter J.D. Donahue*
- Validity and Reliability of the 15-item Chinese Geriatric Depression Scale (249) *Daniel W.L. Lai*
- Immigrant Women Caring For Elders: Caregiving Values and Support (250) *Anne Neufeld, Margaret J. Harrison, Miriam J. Stewart, Karen D. Hughes*
- Chinese Immigrant Women Who Care for Aging Parents (251) *Ho Hon Leung, Lynn McDonald*



Saturday,  
October 28

## Round Table

Room: Private Dining Room

- New Attitudes in Designing Products, Environments and Technology for an Aging Society (252) *Lili Liu, Ian Brodie, James Dunsmuir*

## Symposia

Room: Strathcona

- Active Living IS the Attitude: Redefining Leisure for Seniors (253) *Bevan C. Grant, Wendy Zelt, June Hole, Sandy O'Brien Cousins*

Room: Manitoba/Saskatchewan

- Provincial Initiatives in Response to the Aging of the Population (254) *Vivien Lai, Karen Kryczka, Diane Johnston, Laura A. Pisko-Bezruchko*

## Workshop

Room: Imperial Suite

- Consultant Pharmacist Interventions in Long Term Care Facilities (255) *Rosemarie Pavlakovic, Diane E. Hindman*

## Oktoberfest

Time: 18:15

Location: Cocktails: British Columbia/Alberta Room

Dinner: Manitoba/Saskatchewan Room

Join us in celebrating the fact that we don't need to get up early Sunday morning for more presentations - no curfew tonight! In recognition of Edmonton's large German community and the timing of the conference, we are planning a CAG Oktoberfest - pack those laderhosen! We will hear from the IAG organizing committee and our conference closing speaker, Frank Ogden, who will entertain and challenge us with his thoughts on where technology is taking us. You won't want to miss this grand finale to the conference!

## Keynote Session

Time: 20:00 - 21:00

Location: Manitoba/Saskatchewan Room

*Please Note: This session will be presented in English. Simultaneous Interpretation and audio-taping are provided for all Keynote Sessions. If you require a translation device or would like to purchase an audio cassette of this presentation, please visit TELAV Audio-Visual Services at the back of the room.*

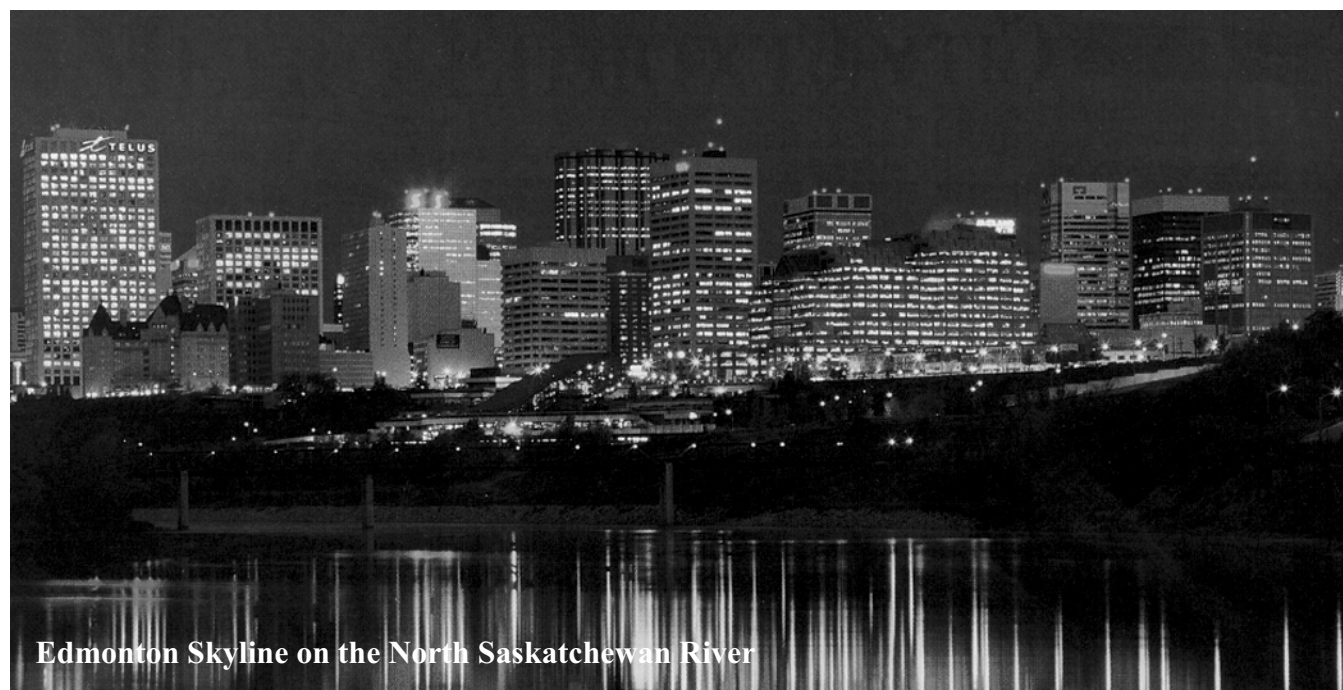


## Technology

**Frank Ogden**

*"Get Used to It: Navigating the World of Techno-Self-Service"*

From Vancouver, BC, Frank Ogden monitors the heavens for world-shaping events via satellite from his electronic houseboat. At 78 years of age, this globally renowned futurist has participated in a lived life, exploring and challenging today with ideas and technology of the future. He is the best selling author of "The Last Book You'll Ever Read" and "Navigating in Cyberspace: A Guide to the Next Millennium". In 1979, he began monitoring 200 satellites and 2,000 data banks to provide a video-clipping service for forward thinkers wanting information on new and relevant business developments. Now Ogden circles the globe as a consultant to companies and countries, preparing people to trek along the fast track. "A bulldozer of change is charging over the planet," he says. "And if you're not part of the bulldozer, you'll become part of the road." Mr. Ogden travels continuously to present seminars and to research the latest in technological, educational, business, communications, political, social and environmental developments. He brings to this conference challenging insights into how technology can have a profound impact on the Canadian aging



Edmonton Skyline on the North Saskatchewan River



## Notes